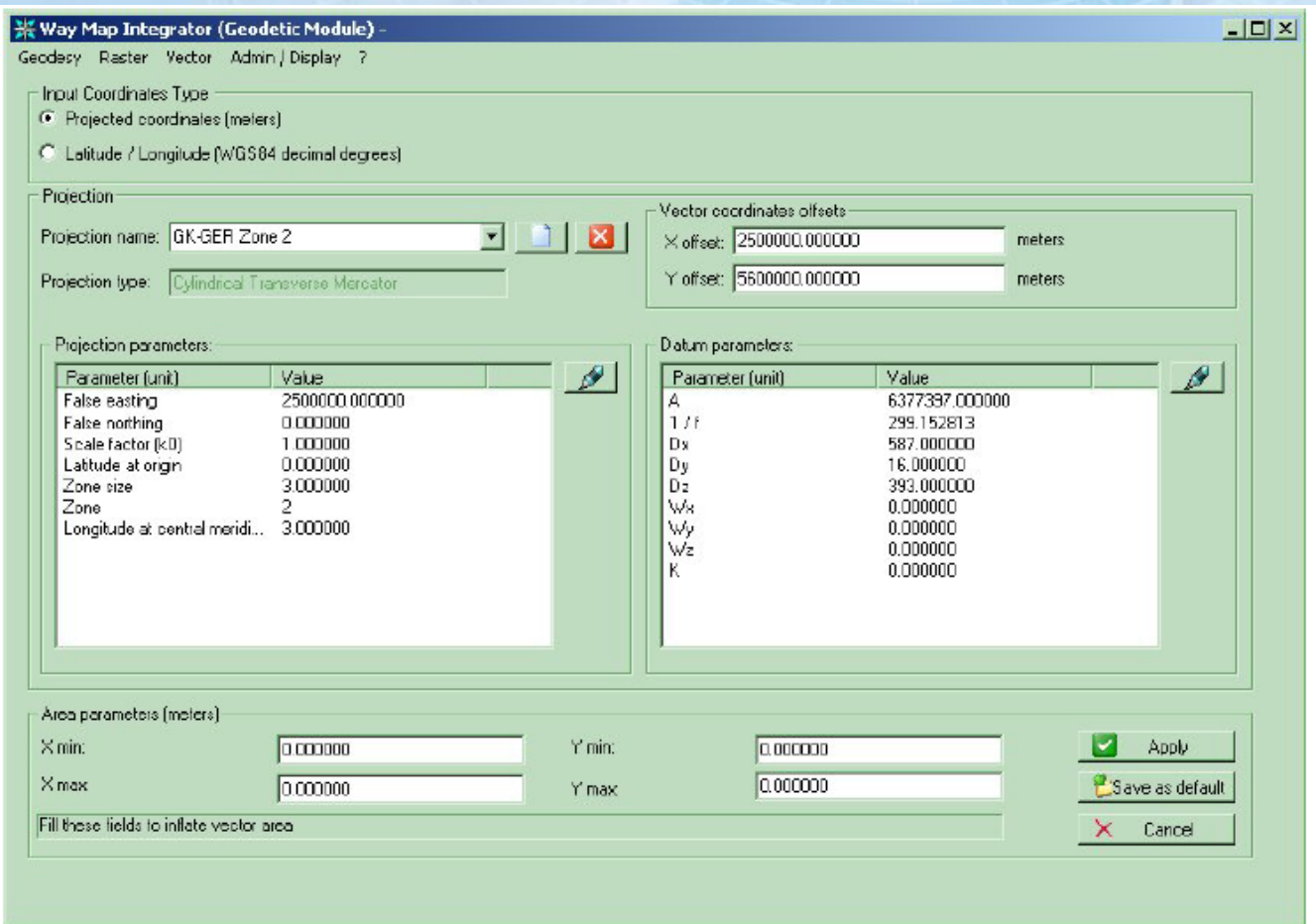


# M9649 AVL WAYMAP INTEGRATOR FOR AUTOMATIC VEHICLE LOCATION APPLICATION



- Integration of Raster Maps (conversion of Customer maps into proprietary Format)
- Intégration of Vector Maps (conversion of Customer maps into proprietary Format)
- Specify geodetic parameters
- Maps administration
- User friendly MMI in a Window <sup>™</sup> environment

## Functions

### Specifying geodetic parameters

- Projected coordinates
- Geographical coordinates (WGS84)
- Projection type
  - . Cylindrical Transverse Mercator
  - . Cylindrical Oblique Mercator
  - . Cylindrical Direct Mercator
  - . Direct Lambert Conformal Conic
- Datum parameters
- Minimal area

### Integrating Raster map

- BMP file with 256 colours without compression
- GIF file with 256 colours not interlaced
- Fitting map

### Integrating Vector map

- DXF files (ArcView, ARC/INFO, MIF/MID MapInfo, AutoCAD) in 14.0 release or previous release
- Layer configuration: roads, surfaces, localities
- Multiple files integration

### Administrating and displaying maps

- Vector maps
- Viewer NOTE : Maps are not supplied with the Waymap Integrator application.

## Components and interfaces

### Software / dongle / licences

- **M9649L** : 1 Waymap Integrator Position

## Additional essential elements to be ordered separately

### Software

- **M9648L AVL1** : 1 AVL Display Position

### Hardware

- **M9648 Server** : location Server PC / Windows 2000 Server Ethernet interface
- **M9600 PC4** : AVL Display disposition : Windows 2000 Server Ethernet Interface