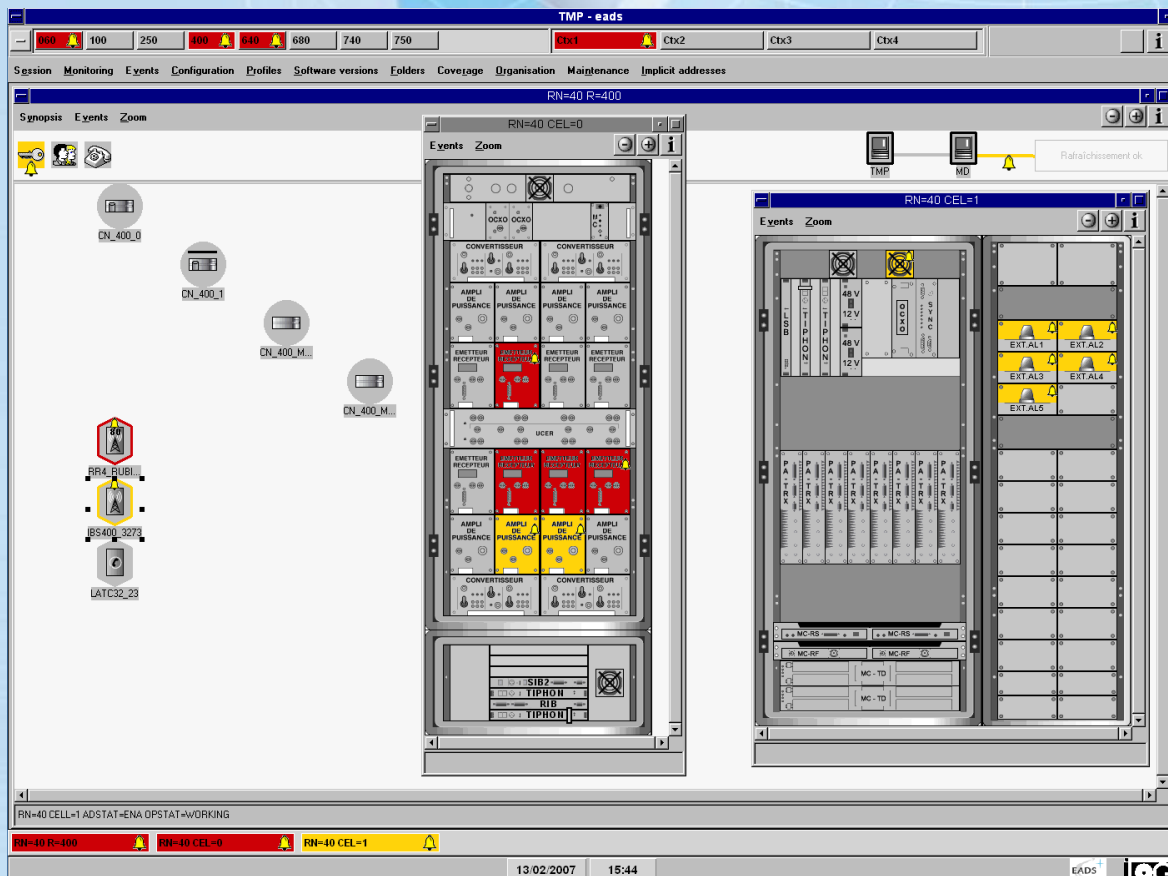


M9641 IP TDP

IP Technical Display Position



User-friendly interface (graphic presentation, large screen, status synthesis on synopsis).

Dedicated technical management position for shared network operators.

Available on PC Windows (*)

(*) M9643 TWP can be installed on the same position than TDP (TDP software and TWP software can be set up together on the same machine).

Features

- Dedicated to one or more regional networks (maximum : 8) : see clause « [Licences](#) » below.
- Network supervision and configuration :
 - Real time network supervision
 - Site display (zoom functions from regional network level to board levels)
 - Infrastructure attribute display
 - Software status display (software version checks)
 - Fault display (alarms and status)

Licences

- TDP basic licence : mono-RN and less than 20 TRX (transmitter-receiver)
- TDP mono-RN : from 21 up to 100 TRX
- TDP mono-RN : from 101 up to 300 TRX
- TDP mono-RN : more than 300 TRX
- TDP multi-RN : from 2 up to 4 RN
- TDP multi-RN : from 5 up to 8 RN

Components and interfaces

- TDP application software kit for Windows on CD-ROM
- Corba interface : ORBIX licence
- ILOG Views and ILOG Server software
- TCP/IP standard
- Environment CD

Additional essential elements to be ordered separately

- PC
- Cable for connecting LAN to MD

Options to be ordered separately

- Printer : **local printer or network printer**

Technical specifications

Minimum PC configuration :

Microprocessor	P IV 2600
RAM	512 Mo
Monitor	19"
Resolution	1280*1024
Colours	65536
Hard disk	20 Go
Operating System:	Windows

Mandatory equipment:

Ethernet board
CD ROM drive
Floppy disk drive
Keyboard and mouse