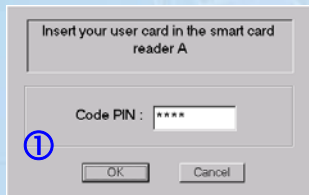
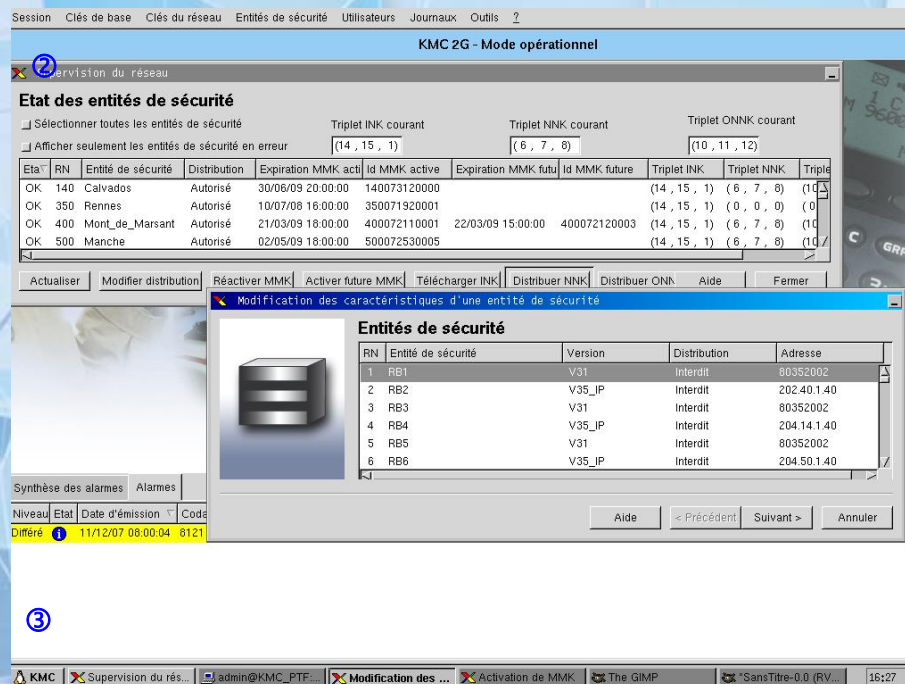


M9641 KMC 2G V2 Key Management Centre



- ① Strong authentication
- ② Centralised Key management
- ③ Real time log events



Management of infrastructure keys and master keys in a M9600 multi-RN system.
Exhaustive security log of all events and alarms and permanent storage.
Strong authentication of KMC 2G access by using smart card.
Advanced management of user profiles.
Hardware protection of the KMC 2G secret elements on the cipher board.
User-friendly MMI for a direct access to functionality, with on-line help for each window to assist the user.

Operational conditions:

The KMC 2G assumes the generation, the delivery and destruction of ciphering keys within a M9600 multi-RN system.

Due to the critical Key Management feature, it has to be located within an access controlled area.

Features

- Centralised security management of all regional entities of the network.
- Generation of all infrastructure keys and all master keys of a M9600 system.
- Automatic and secured delivery of national communication keys towards each regional security entity.
- Mutual authentication, encryption and integrity check mechanisms for totally secure key delivery.
- Complete and ergonomic supervision of key delivery.
- High performances and security from hardware based cryptography.
- KMC 2G intrinsic security based on smart card access control, secured database and dedicated logs.
- Definition of three user profiles (i.e. operator, administrator and certification authority) allowing predefined access levels to KMC 2G functions.
- Functional compliant with the M9641 KMC 1G in version 35.
- PKCS#11 standard for the access to smart card reader and cipher board.
- Online help for all operational functions.
- Available in English language.

Components and interfaces

KMC 2G Server (hardware minimal configuration):

- Pentium IV PC server
- Ethernet interface (10/100 Mbps, RJ-45)
- 17" flat panel monitor
- Qwerty or Azerty keyboard
- Internal smart cards reader
- Hard drive for permanent storage
- EADS cipher board fitted with security ASIC
- Local laser printer

Third-part software:

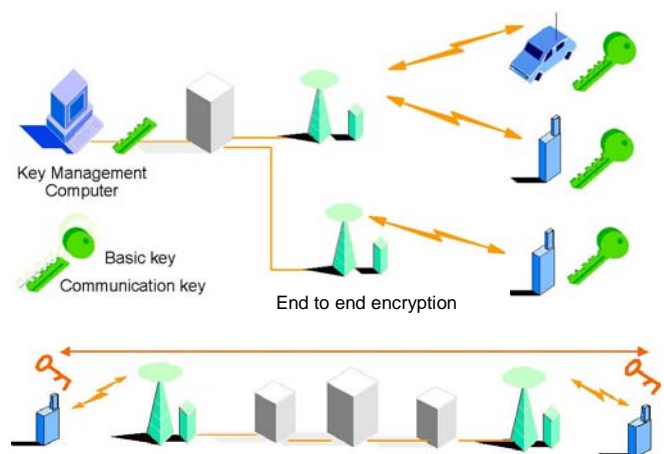
- LINUX operating system from Red Hat Enterprise
- Postgres RDBMS
- Windows GTK

Dedicated software:

- KMC 2G application
- Cipher board software

Interfaces:

- Native TCP/IP interface with Control Nodes and X.25 option for Main Switches management (M9641 KMC 2G OPT X.25)
- Physical support interface with security entities for master keys by using KLU device (M9641 KLU), on floppy disk or CDROM.
- Physical support interface with terminals for master keys by using TPS device (M9643 TPS) on floppy disk or CDROM.



Additional essential elements to be ordered separately

- **M9641 KMC 2G OPT X.25 – Active X.25 board for leased lines**
Mandatory package to allow the management of security entities connected through a X.25 network.

Options to be ordered separately

- **M9641 KMC 2G OPT SC – Dedicated cryptographic Smart Cards**

Additional smart cards (x10) for authentication purpose and secret elements backup.

- **M9641 KMC 2G OPT UPS – Uninterruptible Power Supply**

UPS to protect the KMC unit and screen against main supply disruptions or breaks and increase system availability.

Technical specifications

Environment conditions:

Computer and screen

Power supply and line frequency: 90~264V CA full range

Consumption in function: 380 Watt max

Operational temperature: 41°F to 77°F / 5°C to 35°C

Storage temperature: -4°F to 140°F / -20°C to 60°C

Operation humidity: 20~80%

Storage humidity: 20~95%

Laser printer:

Power supply and frequency: 100 à 127 V CA (+/- 10 %), 50/60 Hz (+/- 2 Hz) ;
220 à 240 V CA (+/- 10 %), 50/60 Hz (+/- 2 Hz).

Consumption in function: 600 Watt max

Operational temperature: 50°F to 93°F / 15°C to 32,5°C

Storage temperature: -4°F to 104°F / -20°C to 40°C

Relative humidity: 20~80% (non-condensing)

Acoustic Noise:

Computer

L_{pAm} 34,4 dB(A)

Laser printer (ISO 9296)

L_{WAd} 6,5 B(A)

L_{pAm} 51 dB(A)

Dimensions (WxHxD) and weight for the minimal configuration, unpacked:

PC server : 8.0 x 20.5 x 18.5 in / 20,5 x 52,2 x 47,3 cm – 17.5 lb / 8 kg without elements

Flat monitor with stand: 18.7 x 16.2 x 10.4 in / 47,7 x 41,3 x 26,5 cm – 18.5 lb / 8,4 kg

Laser printer : 16.5 x 12.2 x 16,1 in / 42 x 31 x 41 cm – 35.5 lb / 16,2 kg